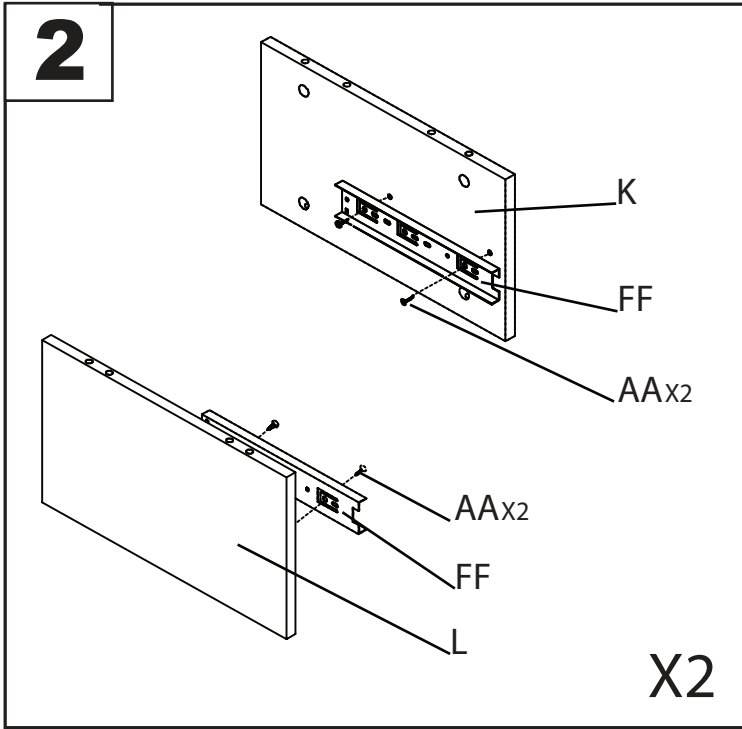
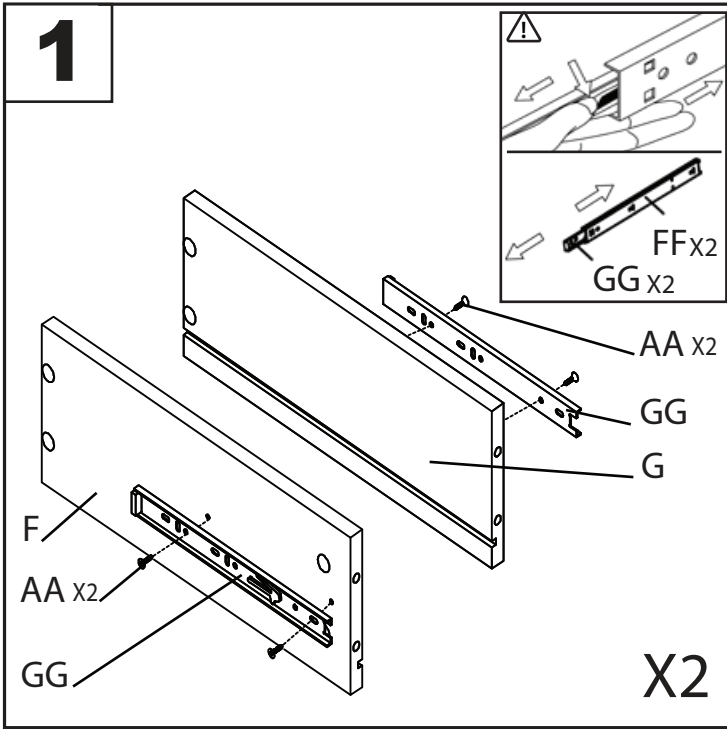
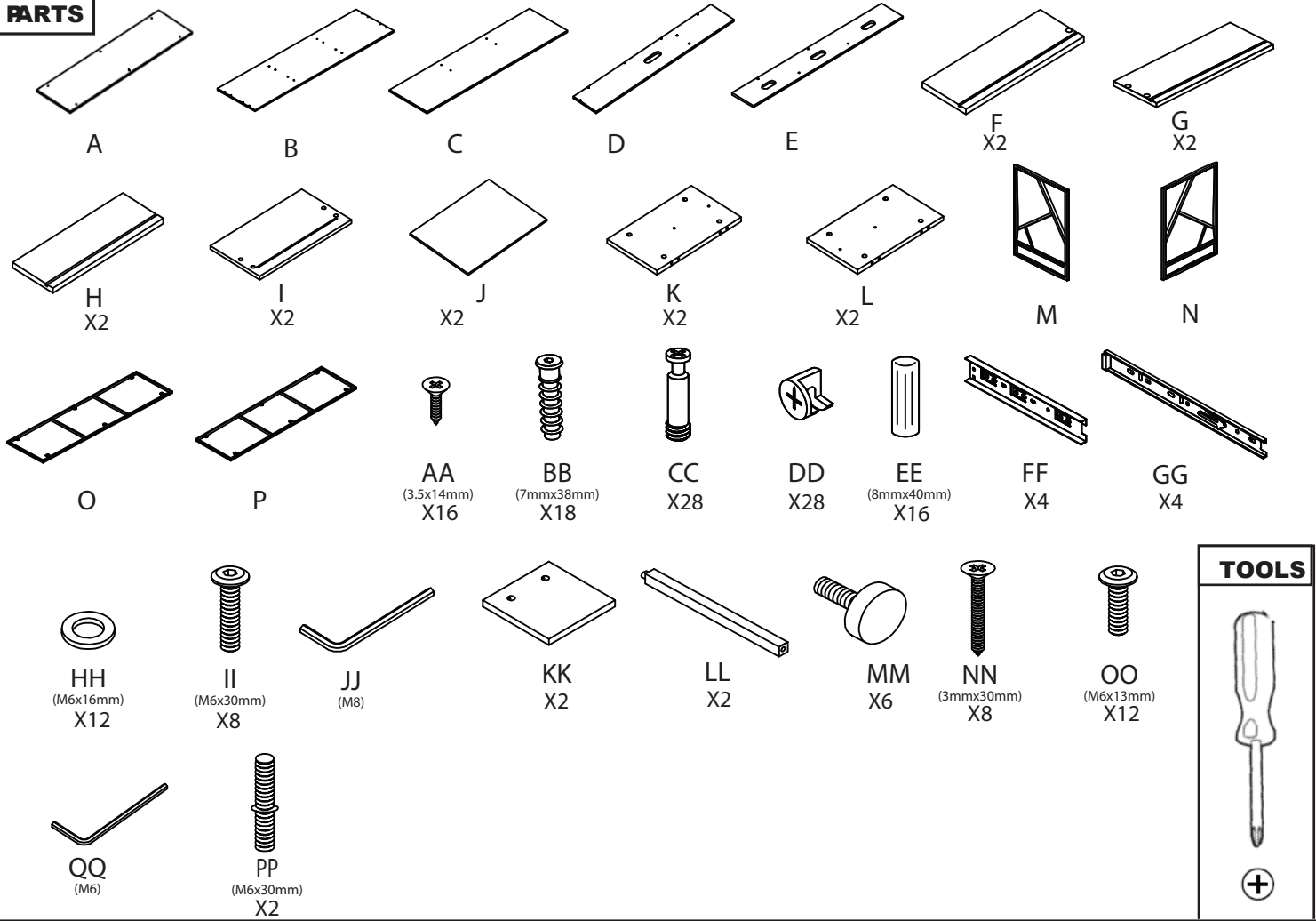


Part # TV-FOLIA2 XX+XX

22-0427

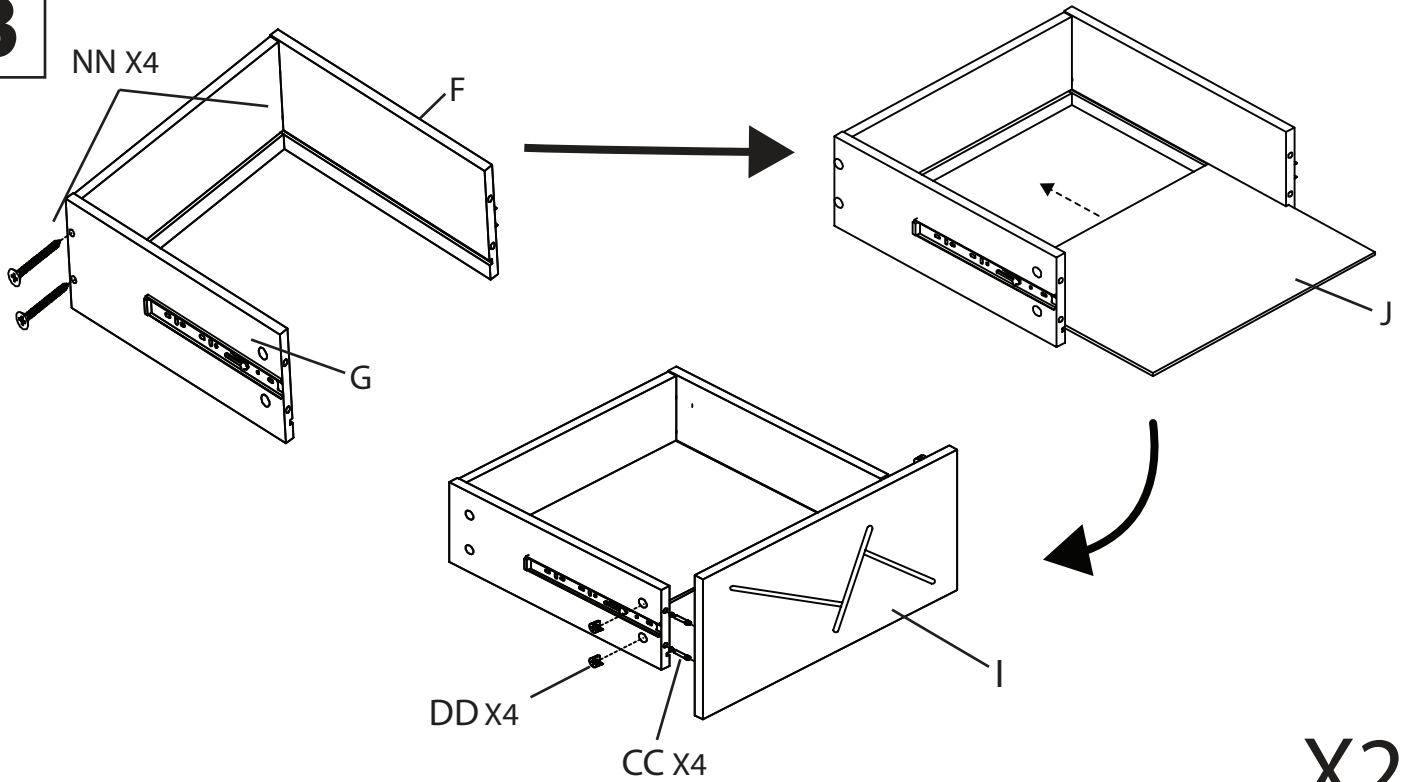
PARTS



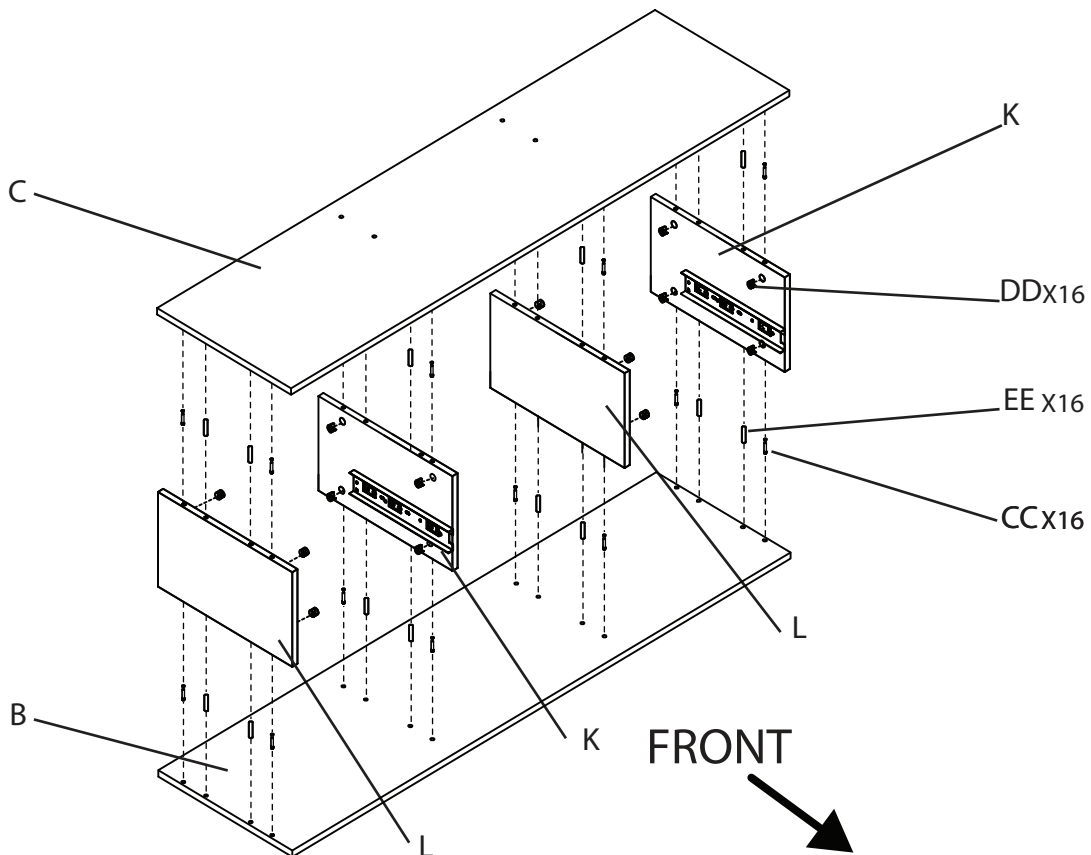
Part # TV-FOLIA2 XX+XX

22-0427

3



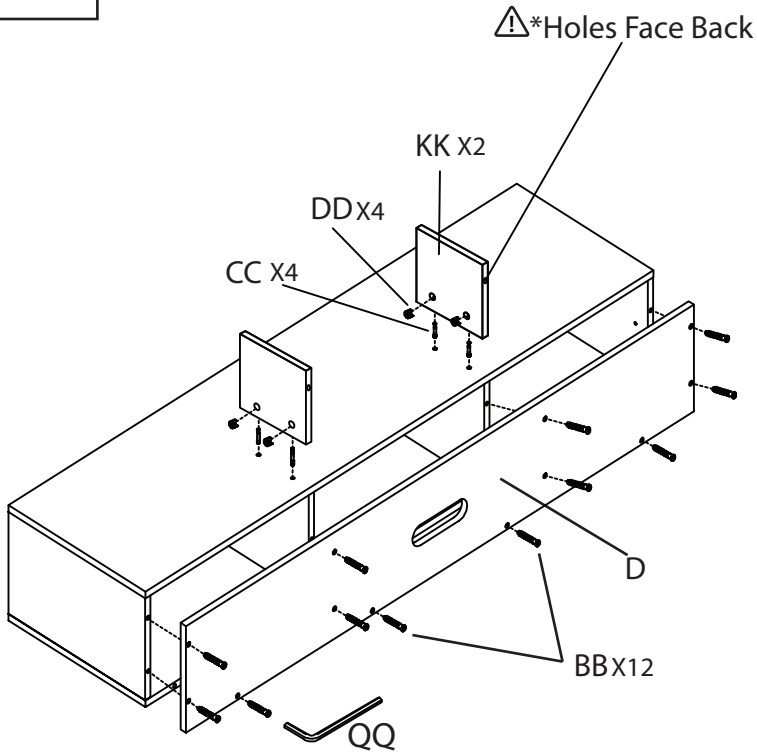
4



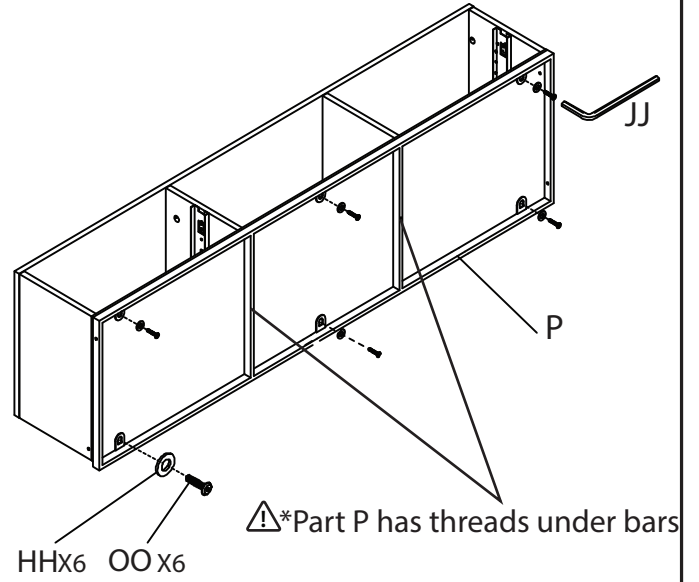
Part # TV-FOLIA2 XX+XX

22-0427

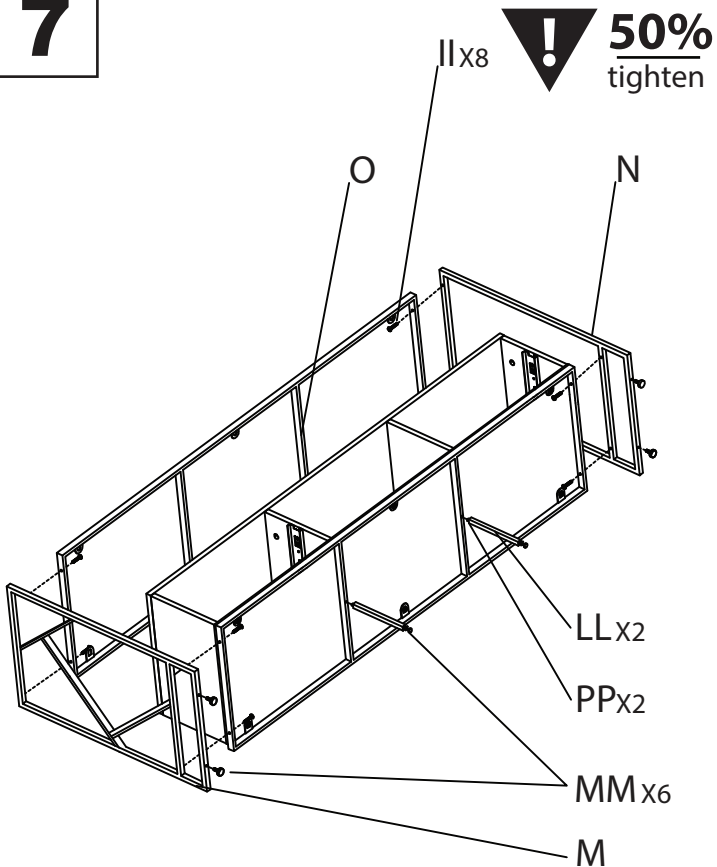
5



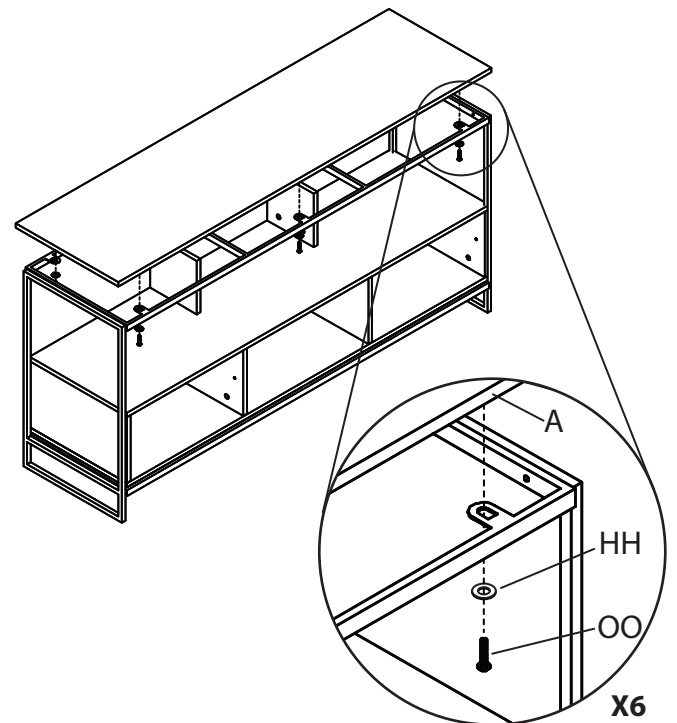
6



7

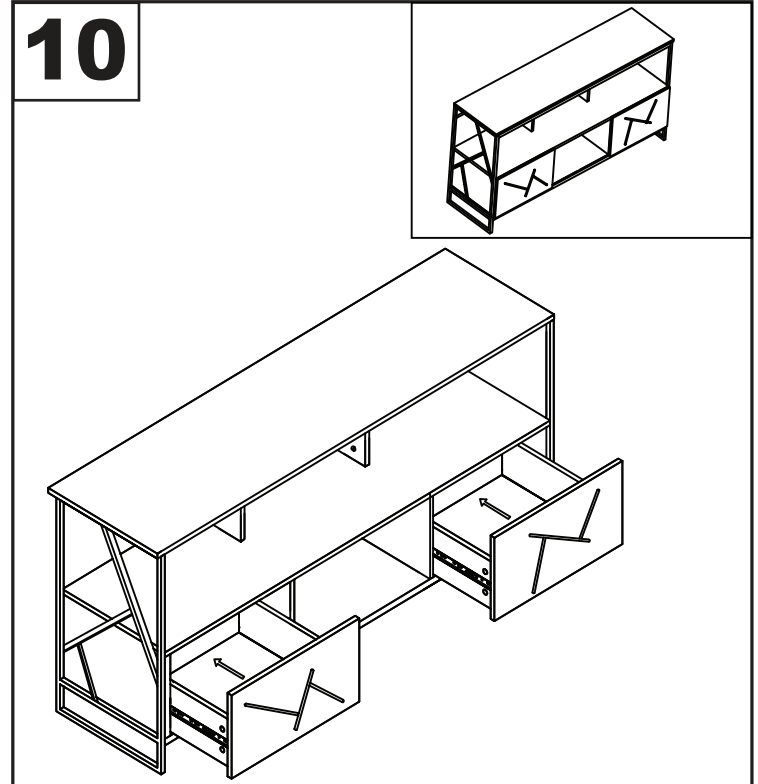
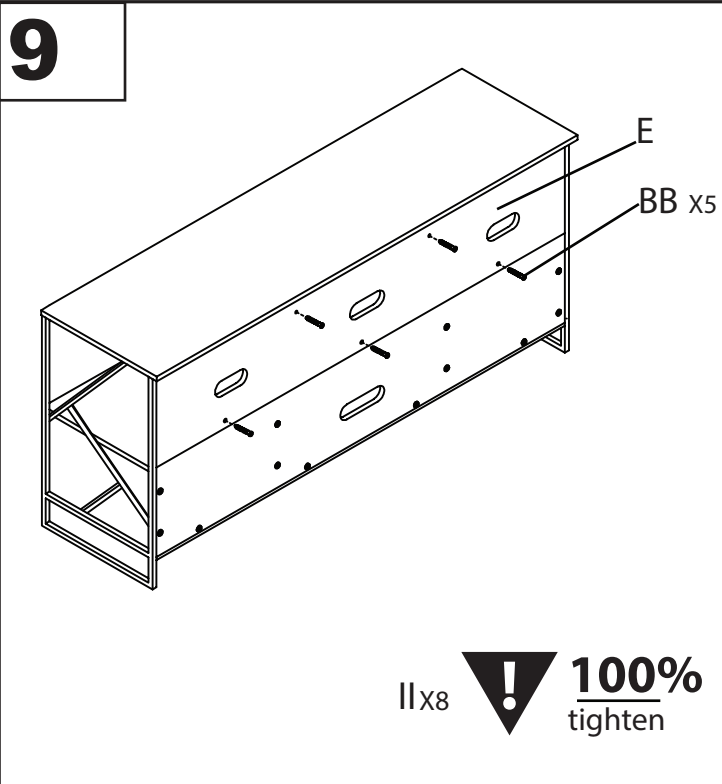



8



Part # TV-FOLIA2 XX+XX

22-0427



 **SAFETY WARNING:**



• TV's CAN CAUSE SERIOUS INJURY OR DEATH DUE TO TIPPING OVER
• SECURE TV TO THE WALL OR FURNITURE TO AVOID POTENTIAL TIPPING INJURY
• FOR MORE INFORMATION VISIT: WWW.ANCHORIT.GOV

• TV's PUEDEN CAUSAR LESIONES GRAVES O LA MUERTE POR CAERSE
• ASEGURE LA TV A LA PARED O AL MUEBLE PARA EVITAR LESIONES POTENCIALES POR VUELCO
• PARA MÁS INFORMACIÓN VISITE: WWW.ANCHORIT.GOV

• LES TV PEUVENT CAUSER DES BLESSURES GRAVES OU LA MORT EN RAISON DE RENVERSEMENT
• SÉCURISER LE TV AU MUR OU AU MOBILIER POUR ÉVITER LES BLESSURES POTENTIELLES DE BASCULEMENT
• POUR PLUS D'INFORMATIONS, VISITEZ: ANCHORIT.GOV

⚠ WARNING: TV STANDS

- Read all instructions carefully and completely before assembly and use. Retain for future reference.
- Keep plastic bags and small parts away from children.
- For residential (non-commercial) use only.
- Make sure TV is anchored to Wall or Item.
- Item must be anchored to the wall by the frame mounts.
- DO NOT lean, hang, or sit on the product.
- Total weight limit: 150 lbs.
- Periodically check for loose hardware; retighten as necessary.
- DO NOT use product if any component becomes damaged.
- DO NOT stand on product. Use only for intended purpose.
- DO NOT put children or animals inside drawers (if applicable).
- DO NOT use power tools to assemble OR overtighten hardware.
- Avoid setting heavier items on the top shelves.